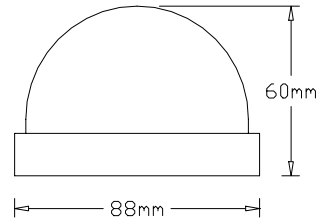


ECD-312N / 312NH

SONY CCD COLOR DOME CAMERA

ECD-312NL / ECD-312NHL

HIGH PERFORMANCE SONY CCD COLOR DOME CAMERA



~ Description ~

E series mini dome camera are performance CCD camera specially designed for indoor low profile surveillance. The casing is made of high quality ABS and PC plastic, to ensure light weight, long lasting and remain maintenance free for many years. Various high quality module are used to ensure customer satisfaction for each installation.

~ Features ~

- 1/3" Sony CCD
- 420 or 480 TV Lines respectively
- Minimum Illumination : 0.5 Lux
- Wide voltage range
- Optional Indoor Plastic Wall Mount bracket : WM10
- Build-in standard **3.7mm** Lens, Optional 2.9/6/8/12mm Lens

Lens Size (mm)	2.9	3.6	6.0	8.0	12.0
Viewing Angle	130°	92°	53°	40°	28°
Recognizable Distance(m)	3.0	3.5	6.0	8.0	12.0
Best Pic.Distance(m)	1.2	1.5	2.3	3.0	4.0

~ Specifications ~

Model	ECD-312N	ECD-312NH	ECD-312NL	ECD-312NHL
Image Sensor	1/3" Sony CCD		1/3" Sony Super HAD CCD	
Effective Pixels	512(H) x 582(V)	752(H) x 582(V)	512(H) x 582(V)	752(H) x 582(V)
Synchronization	Internal			
Lens	Standard 3.7mm, Optional 2.9/6/8/12mm Lens			
Horizontal Resolution	420 TV Lines	480 TV Lines	420 TV Lines	480 TV Lines
Minimum Illumination	0.5 Lux		0.1 Lux	
S/N Ratio	48dB			
Electronic Iris	1/60 to 1/100,000s			
Video Output	1Vp-p Video Composite			
Power Consumption	6-18VDC, 58mA Max.		6-18VDC, 70mA Max.	
Operating Temperature	0° to +50° C			
Weight	150g			