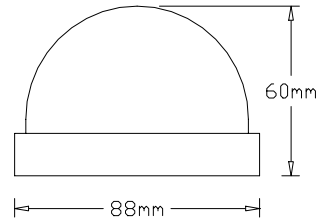


ECD-412S 1/4" SHARP CCD COLOR DOME CAMERA

ECD-312S 1/3" SHARP CCD COLOR DOME CAMERA



~ Description ~

E series mini dome camera are performance CCD camera specially designed for indoor low profile surveillance. The casing is made of high quality ABS and PC plastic, to ensure light weight, long lasting and remain maintenance free for many years. Various high quality module are used to ensure customer satisfaction for each installation.

~ Features ~

- 1/4" & 1/3" SHARP CCD
- Low Cost and Excellent Image Quality
- 380 or 420 TV Lines respectively
- Minimum Illumination : 0.5 Lux
- Optional Indoor Plastic Wall Mount bracket : WM10
- Build-in standard **3.6mm** Lens, Optional 2.9/6/8/12mm Lens

Lens Size (mm)	2.9	3.6	6.0	8.0	12.0
Viewing Angle	130°	92°	53°	40°	28°
Recognizable Distance(m)	3.0	3.5	6.0	8.0	12.0
Best Pic.Distance(m)	1.2	1.5	2.3	3.0	4.0

~ Specifications ~

Model	ECD-412S	ECD-312S
Image Sensor	1/4" SHARP CCD	1/3" SHARP CCD
Effective Pixels	512(H) x 582(V)	
Synchronization	Internal	
Lens	Standard 3.6mm, Optional 2.9/6/8/12mm Lens	
Horizontal Resolution	380 TV Lines	420 TV Lines
Minimum Illumination	0.5 Lux	
S/N Ratio	48dB	
Electronic Iris	1/60 to 1/100,000s	
Video Output	1Vp-p Video Composite	
Power Consumption	9-15VDC, 75mA Max.	
Operating Temperature	0° to +50° C	
Weight	150g	