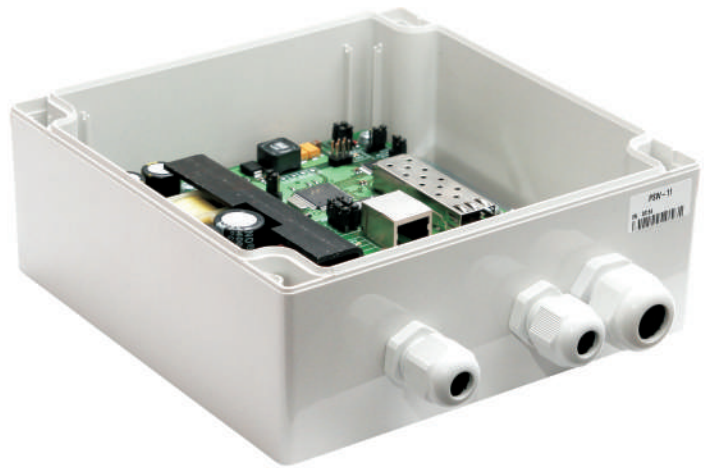




TFortis-PSW-11 Unmanaged Switch



TFortis PSW-11 – unmanaged switch. It is designed for locating a single IP camera over a long distance. It has 1 port 10/100Base-Tx PoE with RJ-45 connector and 1 port SFP 100/1000 Base-X. It is made in a hermetic casing IP66. Operation temperature is - 55° C to + 50 ° C (-67°F to 122°F).

Port with PoE provides quality power supply to IP cameras.

The optical port of the switch is made in the form of a SFP slot. SFP-cages allows using different types of optical transceivers and transmitting traffic to long distances.

Monitoring function for IP-camera hanging allows to deal effectively with their hanging.

Built-in Lightning Protection on ports and 220 V power supply protects equipment from high-voltage surges.

Power for camera and TFortis TH housing is supplied via one cable ("twisted pair").

Technical specifications

Ports	- 1 port 10/100Base-Tx RJ-45 PoE - 1 port 100/1000Base-X SFP
PoE	- IEEE 802.3af according to Mode A and B up to 15.4 W per port* - supports Passive PoE according to Mode B
Management	- Unmanaged
Supply voltage	- 220 VAC
Maximum power consumption	- 60 W
Casing	- IP66
Operating temperature	- -55 to +50°C (-67 to 122F)
Maximum Weight	- 2 kg
Dimensions	- 160 × 160 × 90 mm

* Mode A - power is supplied via DATA pairs (1,2 and 3,6). Mode B - power is supplied via free pairs (4,5 and 7,8).